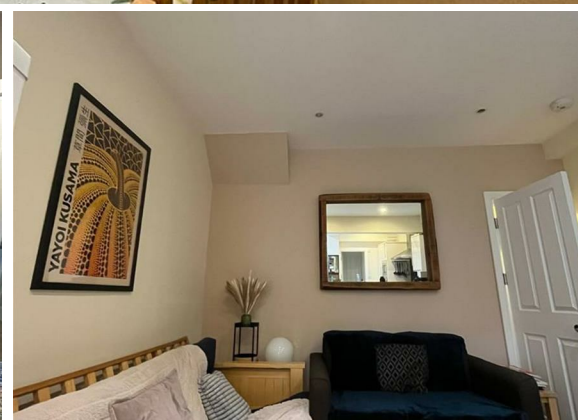




4 Bed
House - Semi-
Detached
located in

£450 PCM



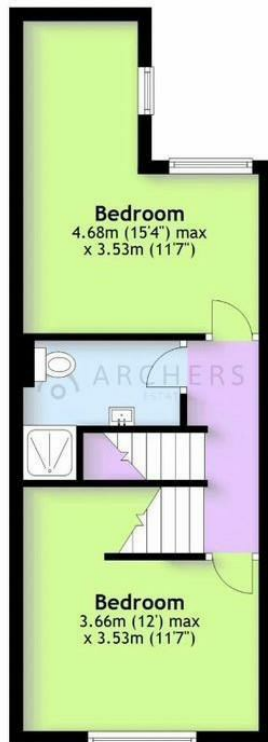
Ground Floor

Approx. 42.6 sq. metres (458.9 sq. feet)



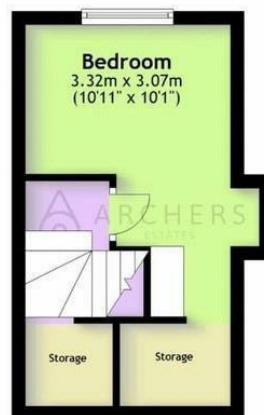
First Floor

Approx. 32.8 sq. metres (352.9 sq. feet)



Second Floor

Approx. 17.9 sq. metres (192.7 sq. feet)



Total area: approx. 93.3 sq. metres (1004.5 sq. feet)

Whilst every attempt has been made to ensure the accuracy of the floor plan contained here, measurements of doors, windows, rooms and any other items are approximate and no responsibility is taken for any error, omission, or mis-statement. This plan is for illustrative purposes only and should be used as such by any prospective purchaser. The services, systems and appliances shown have not been tested and no guarantee as to their operability or efficiency can be given.

Energy Efficiency Rating		
	Current	Potential
Very energy efficient - lower running costs		
(92 plus) A		
(81-91) B		
(69-80) C		
(55-68) D	65	80
(39-54) E		
(21-38) F		
(1-20) G		
Not energy efficient - higher running costs		
EU Directive 2002/91/EC		
England & Wales		

DIRECTIONS

CONTACT

8-10 Broomhall Road
Sheffield
S10 2DR

E: info@taptonestates.co.uk
T: 0114 268 3325
www.taptonestates.co.uk

